

# Make a Card



1. Fold the card in half

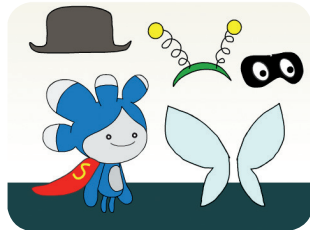


2. Glue the backs together



3. Cut along the dashed line

## Fashion Game Cards



Dress up a character with different clothes and styles.

## Fashion Game Cards

Start with the first card and then try the other cards in any order:

- Choose Your Character
- Play with Colors
- Change Styles
- Change Backdrops
- Lay Out Your Clothes
- Glide into Place
- Snap into Place

Scratch

Scratch

# Make a Card



1. Fold the card in half



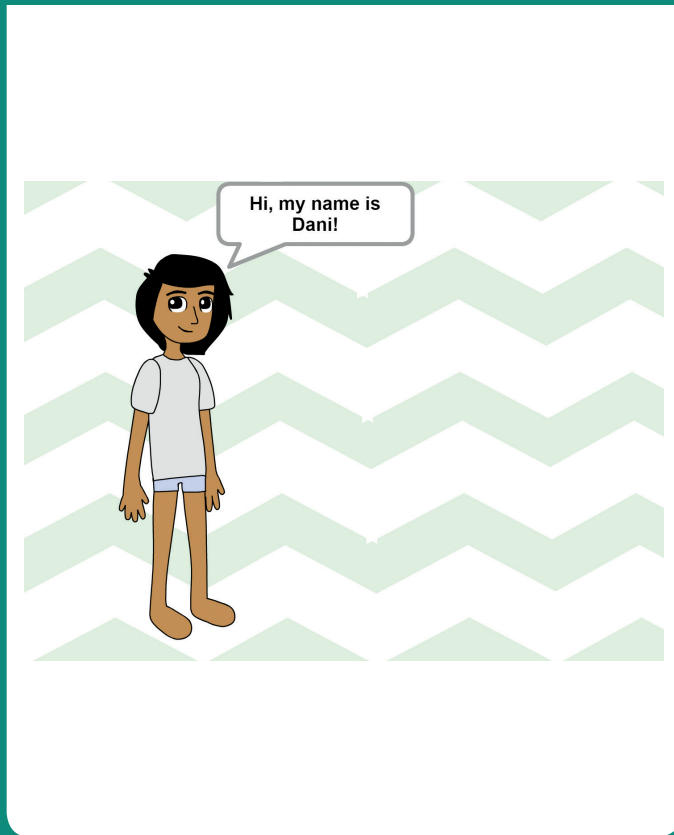
2. Glue the backs together



3. Cut along the dashed line

## Choose Your Character

Choose your character and have them say something.



Dress-Up Game

1



## Choose Your Character

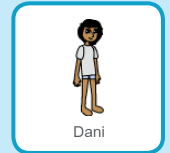
### GET READY



Choose a backdrop.

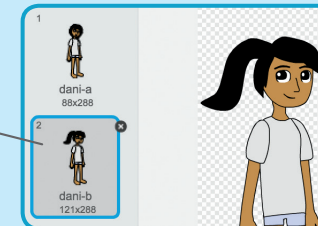


Choose a character from the Dress-Up theme.



Click the **Costumes** tab.

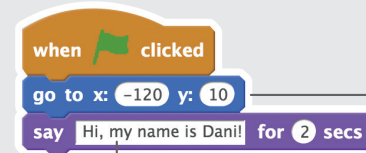
Then select the look you want.



You can use the paint bucket to change colors!

### ADD THIS CODE

Click the **Scripts** tab.



Set the starting position.

Type what you want your character to say.

### TRY IT

Click the green flag to start.



# Make a Card



1. Fold the card in half



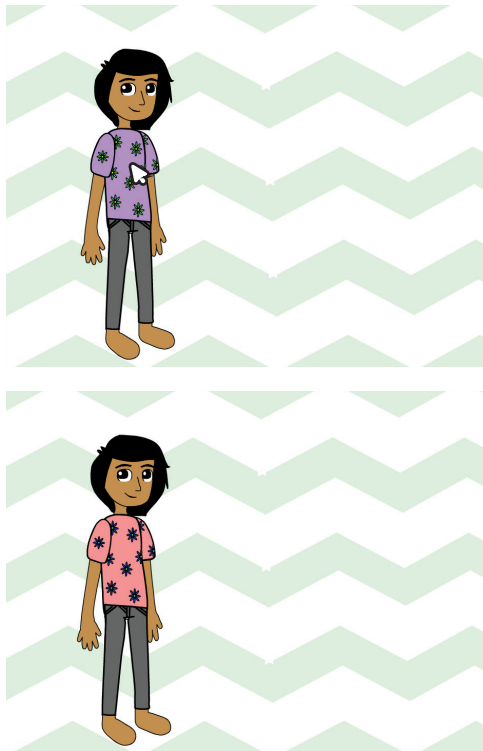
2. Glue the backs together



3. Cut along the dashed line

## Play with Colors

Click to change the color of clothing.



Dress-Up Game

2

SCRATCH

## Play with Colors

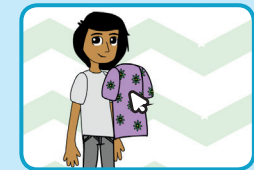
### GET READY

Choose a piece of clothing, like Shirt2.

New sprite:



Drag the clothing onto your character.



### ADD THIS CODE

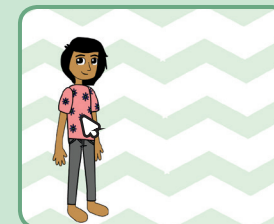


when this sprite clicked

change color effect by 25

### TRY IT

Click your clothing to make it change color.



# Make a Card



1. Fold the card in half



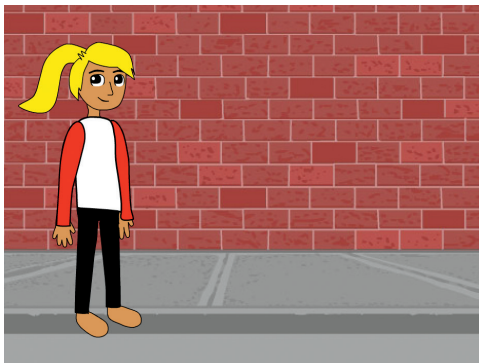
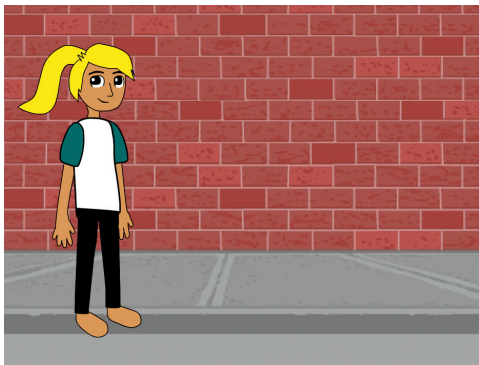
2. Glue the backs together



3. Cut along the dashed line

## Change Styles

Press a key to switch costumes.



Dress-Up Game

3



## Change Styles

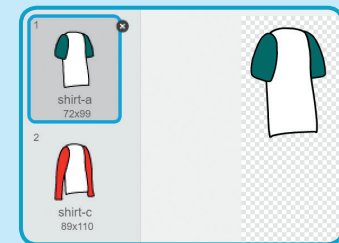
### GET READY

Choose a piece of clothing, like Shirt.

New sprite:



Click the **Costumes** tab.



### ADD THIS CODE

Click the **Scripts** tab.



Switch between costumes.



Keep the shirt in front of your character.

### TRY IT

Click the green flag to start.



Press the **space** key to switch between styles.

# Make a Card



1. Fold the card in half



2. Glue the backs together



3. Cut along the dashed line

## Change Backdrops

Click a button to switch backdrops.



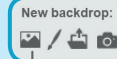
Dress-Up Game

4

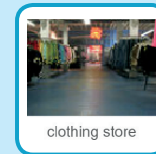
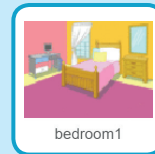
Scratch

## Change Backdrops

### GET READY



Choose two backdrops.



Choose a button sprite, like Arrow1.



### ADD THIS CODE



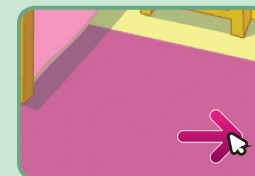
when this sprite clicked

switch backdrop to next backdrop ▾

Choose next backdrop from the menu.

### TRY IT

Click your button to switch backdrops.



# Make a Card



1. Fold the card in half



2. Glue the backs together



3. Cut along the dashed line

## Lay Out Your Clothes

Set out your clothes in their starting positions.



Dress-Up Game

5



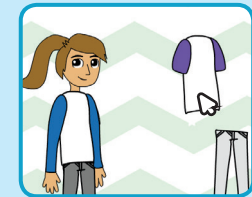
## Lay Out Your Clothes

### GET READY

Choose some clothes and accessories.

New sprite:

Arrange them next to your character.



### ADD THIS CODE

Set the starting position for each piece of clothing.  
(Your numbers may be different.)



when clicked

go to x: 170 y: 70

go to front



when clicked

go to x: 170 y: -20

go to front

### TRY IT

Drag the clothes onto your character.

Click the green flag to reset.



# Make a Card



1. Fold the card in half



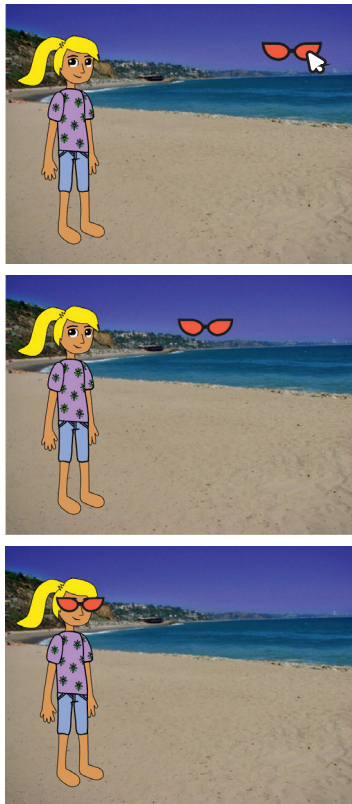
2. Glue the backs together



3. Cut along the dashed line

## Glide into Place

Make accessories glide to the right place.



Dress-Up Game

6

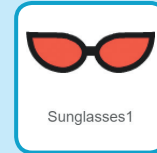
SCRATCH

## Glide into Place

### GET READY

Choose a piece of clothing or an accessory, like Sunglasses1.

New sprite:



### ADD THIS CODE

Set the starting position.

when clicked  
go to x: 170 y: -20  
go to front

Drag the sunglasses onto your character and then add the **glide** block.

when this sprite clicked  
glide 1 secs to x: -120 y: -60

Your numbers may be different.

### TRY IT

Click the green flag to reset.



Click the sunglasses to make them glide to your character.

# Make a Card



1. Fold the card in half



2. Glue the backs together



3. Cut along the dashed line

## Snap into Place

Make clothes snap into place.



Dress-Up Game

7

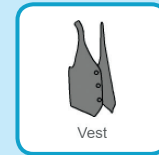


## Snap into Place

### GET READY

Choose a piece of clothing or an accessory, like Vest.

New sprite:    



### ADD THIS CODE

Drag the clothing onto your character and then add this code.

```
when green flag clicked
  forever loop
    if touching Dani? then
      go to x: -125 y: 5
    else
      go to x: 150 y: 50
```

Choose your character.

Snap onto your character.

Go to starting position.

### TRY IT

Click the green flag to start.



Drag the clothing onto your character. Then it will snap into place!